



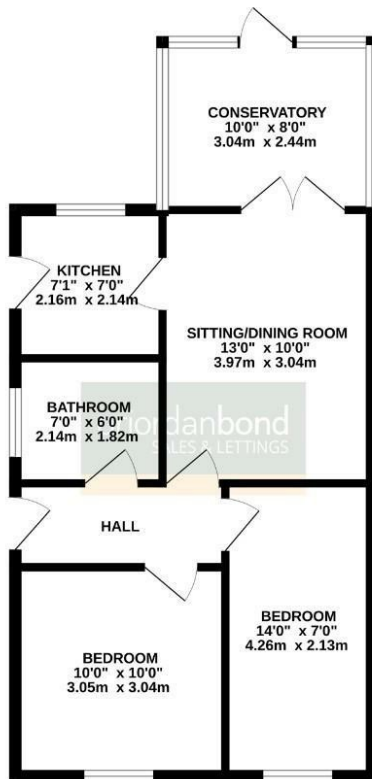
Hollingside Drive

Links View, Northampton

oriordanbond
SALES & LETTINGS



GROUND FLOOR
539 sq.ft. (50.0 sq.m.) approx.



TOTAL FLOOR AREA : 539 sq.ft. (50.0 sq.m.) approx.

While every attempt has been made to ensure the accuracy of the floorplan contained here, measurements of doors, windows, rooms and any other items are approximate and no responsibility is taken for any error, omission or misstatement. This plan is for illustrative purposes only and should be used as such by any prospective purchaser. The services, systems and appliances shown have not been tested and no guarantee as to their operability or efficiency can be given.
Made with Metrepro CSD208

Hollingside Drive

Links View

NN2 7NN

PRICE £185,000

O'Riordan Bond is delighted to offer for sale with no chain this two bedroom semi-detached bungalow in the popular residential area of Links View. The property would benefit from cosmetic improvement but that is reflected in the competitive asking price.

The accommodation comprises entrance hall, sitting/dining room, kitchen with utility, conservatory, two bedrooms and a bathroom. Outside is open plan frontage with a drive providing access to a gated carport and single garage beyond. There a good size garden to the rear. Further benefits include gas radiator heating and uPVC double glazing. (D/539/M)

Additional information

- Council Tax Band: B
- Energy Efficiency Rating: C

Viewing

Viewing strictly by appointment – details below

Disclaimer

O'Riordan Bond Estate Agents Limited has not tested apparatus, equipment, fittings or services and so cannot verify they are in working order. The buyer is advised to obtain verification from their solicitor or surveyor.

O'Riordan Bond Abington Sales

01604 639007

abington@oriordanbond.co.uk

